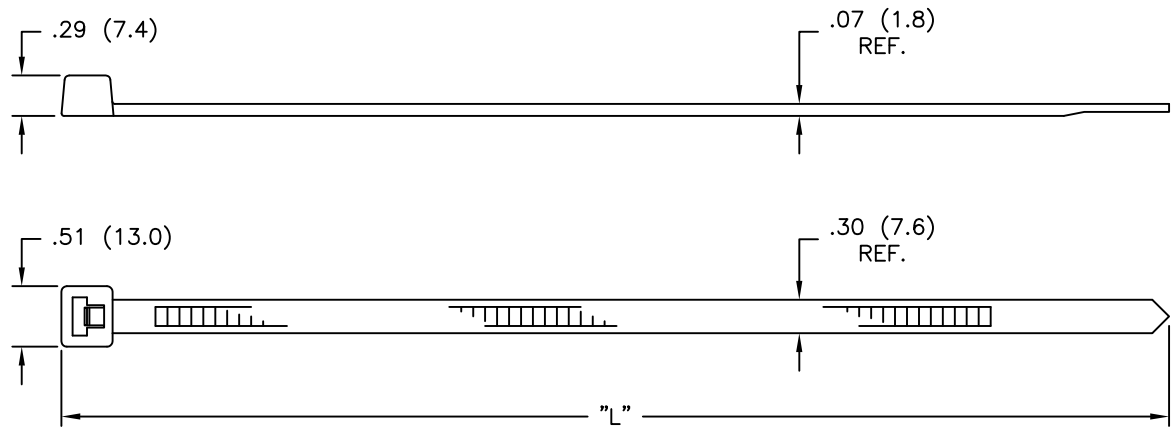


NYLON 6/6 (RMS-01) COLOR: NATURAL PART NO.	UV STABILIZED (RMS-46) COLOR: BLACK PART NO.	MAX. BUNDLE DIA.	LENGTH "L" APPROX.	NYLON 6/6 (RMS-73) LOW TEMPERATURE COLOR: BLACK TO ORDER ADD "-ST" TO P/N	NYLON 6/6 HEAT STABILIZED (RMS-47) UL 94-V2 COLOR: BLACK TO ORDER ADD "-HS" TO P/N
WIT-120S	WIT-120S-UVB	2.00 (50.8)	8-1/2 (215.9)	SPECIAL	SPECIAL
WIT-120R	WIT-120R-UVB	4.25 (108.0)	15-1/16 (382.6)		STANDARD
WIT-120L	WIT-120L-UVB	6.37 (161.9)	21-1/4 (539.8)		SPECIAL



NOTES:

1. MIN. LOOP TENSILE: 120 lbs
2. COLORS: GREEN (-GN), BLUE (-BL), YELLOW (-YL), RED (-RD), NEON-GREEN (-NGN), NEON-YELLOW (-NYL), NEON-PINK (-NPK) AND NEON-ORANGE (-NOR), AVAILABLE BY SPECIAL ORDER ONLY. TO ORDER, ADD COLOR SUFFIX TO PART NO.
3. MATERIAL: NYLON 6/6 UL94-V0 (RMS-75), COLOR: NATURAL. AVAILABLE BY SPECIAL ORDER ONLY, TO ORDER, ADD "-VO" TO PART NO.

H	SEE CO 200134 FOR CHANGES	SK 02.28.08
G	SEE ECN #862 FOR CHANGES	SM 10.04.04
F	SEE ECN #738 FOR CHANGES	SM 12.02.03
E	SEE ECN #724 FOR CHANGES	SM 11.07.03
D	ADDED MAT'L INFO TO TABLE AND NOTES PER CATALOG	SM 05.07.02
C	CHANGED FILE NO. AND TITLE BLOCK	SM 06.19.01
B	UL94 VO MAT'L ADDED	J.L. 07.20.02
A	RMS-46 ADDED TO PRINT	J.L. 06.03.98
REV	DESCRIPTION	ENGR DATE

TITLE: WIT-120 SERIES				DWG IN	IN (MM)	PR
TOLERANCES UNLESS NOTED .XX=±.010 .XXX=±.005 FRAC=±1/64 ANG=±1°	FILE # WIT-120	DWN: P.B.	APP:	FINAL		PART # SEE TABLE PRINT TYPE CA
	MAT'L: SEE NOTES & TABLE	DT: 08-09-02	CHKD:			
	RE: RICHCO, INC.	RICHCO INC. ENG@RICHCO-INC.COM (773) 539-4060				